

## COMMUNITY SERVICES

Anxiety Disorders Clinic  
Derby St. Kingswood

Telephone: 02 4734 3404

Assertive Community Treatment Team  
St Marys Community Health Centre  
28 Gidley St. St Marys NSW 2760

Telephone: 02 9833 6800

Blue Mountains Access Team  
(Assessment and Acute Care Team)  
Katoomba Community Health Centre  
93 Waratah St,  
Katoomba NSW 2780

Telephone: 02 4782 2133  
(Ring 1800 011 511 after hours)

Child and Youth Mental Health Service  
(CYMHS)  
606 High St,  
Penrith NSW 2750

Telephone: 02 4725 9800

Katoomba Community Mental Health Team  
Katoomba Community Health Centre  
93 Waratah St,  
Katoomba NSW 2780

Telephone: 02 4782 2133

Lithgow Community Mental Health Team  
Rose Cottage  
15-17 Hassan St,  
Lithgow NSW 2790

Telephone: 02 6354 0600

Older Persons Community Team  
Penrith NSW 2750  
Telephone: 02 4734 4720

Penrith Community Mental Health Team  
Penrith Community Health Centre  
Soper Pl,  
Penrith NSW 2750

Telephone: 02 4732 9450

Plains Access Team  
(Assessment and Acute Care Team)  
LikeMind  
109 Henry St  
Penrith NSW 2750

Telephone: 1800 011 511

Springwood Community Mental Health  
Team  
Springwood Community Health Centre  
288-292 Macquarie St,  
Springwood NSW 2777

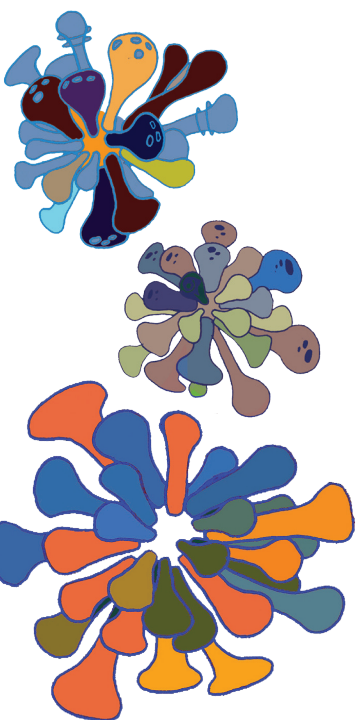
Telephone: 02 4751 0100

St Marys Community Mental Health Team  
St Marys Community Health Centre  
26 Gidley St,  
St Marys NSW 2760

Telephone: 02 9833 6800

Windsor Community Mental Health Team  
8 Ross St,  
Windsor NSW 2753

Telephone: 02 4560 4100



## INPATIENT SERVICES

Acute Inpatient Unit – Nepean Mental Health Centre  
Level 2 Nepean Mental Health Centre,  
Nepean Hospital  
Derby Street  
Penrith NSW 2750  
Telephone: 02 4734 2544

Blue Mountains Mental Health Unit  
Blue Mountains Hospital,  
Great Western Highway,  
Katoomba NSW 2780  
Telephone: 02 4784 6750

High Dependency Unit – Nepean Mental Health Centre  
Level 2 Nepean Mental Health Centre,  
Nepean Hospital  
Derby Street  
Penrith NSW 2750  
Telephone: 02 4734 2544

PECC Unit – Nepean Emergency Department  
Nepean Hospital  
Derby Street  
Penrith NSW 2750  
Telephone: 02 4734 4251

Older People's Mental Health Unit – Nepean Mental Health Centre  
Level 1, Nepean Mental Health Centre  
Nepean Hospital  
Derby Street  
Penrith NSW 2750  
Telephone: 02 4734 2544

